



16/3/16

SKCG

92

SREE KRISHNA COLLEGE, GURUVAYUR
P.G. DEPARTMENT OF BOTANY
HERBARIUM

Cat. No.: 92 Date: 10-12-2015

Bot. Name: *Mischelia Nilagirica* Zenk.

Family: Magnoliaceae

Locality: Nadugani

Local Name: Kattuchempakam

Altitude: 2000 m

Habitat: Shola forest

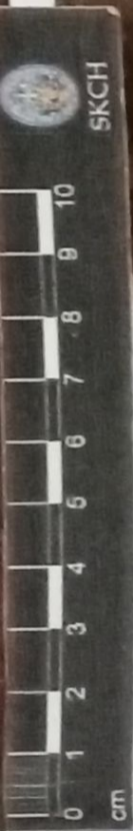
Notes: Small trees, leaves simple. Alka-

nale. Stipulate. Coriaceous. flowers

white. Axillary or terminal. fragrant

Stamens & Pistils are numerous.

Collector: Ananthalakshmi-k.P



Keerped
P. Ganesh

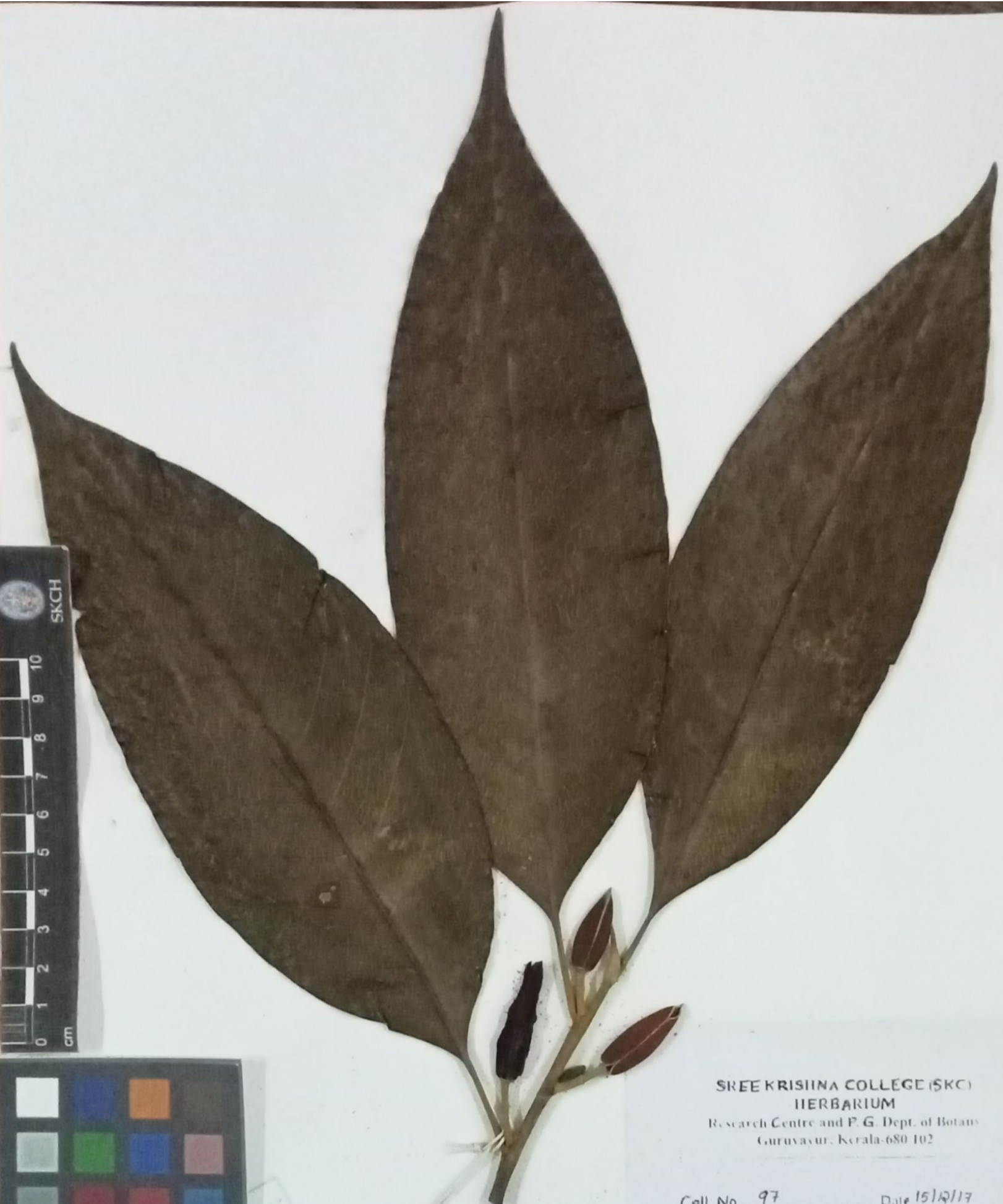


SKCG

275

SREE KRISHNA COLLEGE (SKC)
HERBARIUM
Research Centre and P. G. Dept. of Botany
Guruvayur, Kerala-680 102

Coll. No. 275 Date 13/12/14
Family: Magnoliaceae
Botanical Name: Magnolia grandiflora L.
Local Name: _____
Locality: Kunnampulam
Altitude: ±60m.
Habitat: Cultivated.
Notes: large, dense with large, dark
green leaves up to 20cm long & 12cm
wide. Large, white fragrant flowers.
Leaves are alternate. Flowers are
solitary.
Collector: Megha C. J.



SREE KRISHNA COLLEGE (SKC)
HERBARIUM

Research Centre and P. G. Dept. of Botany
Guruvayur, Kerala-680 102

Cell No. 97 Date 15/12/17

Family Magnoliaceae

Botanical Name: *Michelia champaca* L.

Local Name: Chempakam

Locality: Kathlapoovam

Altitude: 75 M

Habitat: Cultivated

Notes: Trees upto 20-25 m tall, leaves simple
alternate, lanceolate, petiolate, flowers
yellow-orange, fragrant in axillary/
terminal Panicle numerous

Collector: Aleena T John

SKBH
No. 097